



EAGLE RIVER HOMES



Hudson
Single Section

Our Team

Walt Young
Chairman
Jim Dunn
President
Sam Hollister
Vice President & General Manager
Craig Pike
Operations Manager
Lloyd Black
Marketing / Sales Manager
Nick Mangano
Inside Sales Director
Chris Wolfersberger
Development Manager
Mike Hendrick
Service Manager
Diane Ames
Service Coordinator
Drew Musser
Materials Manager
Kathy Fausnacht
Controller
Justin Young
Director of Engineering
David Mooney
CAD Designer
Gary Haight
CAD Designer
Philip Sailor
Quality Assurance Manager
Bill Davidson
District Manager
Tim Zephey
District Manager
Beau Levering
District Manager
Lucas Bragg
Sales Coordinator
Pat Benedict
Asst. Materials Manager
Cherie Thomas
Staff Accountant
Christine Gummel
Staff & Accounting Asst.
Kimberly Champaign
Staff & Accounting Asst.
Roger Somers
Asst. Production Manager
Andy Capwell
Foreman
Brian Douth
Foreman
John Eberly
Foreman
Bob Fickes
Foreman
Greg Hagemyer
Foreman
Andy Newswanger
Foreman
Kelly Barrett
Maintenance



EAGLE RIVER HOMES

Eagle River Homes was founded on the basis of providing the ultimate home value with quality, durability, and flexibility in design, for the benefit of our customers. Our goal is to be the very best manufactured housing facility that our customers have ever done business with.

Our philosophy is to always build the best, most cost effective houses that technology is capable of producing. We specialize in high quality, custom manufactured homes.

Our mission is to build quality homes that live up to our reputation as the premier manufactured home builder in the Northeast. With over 100 years of industry experience, we provide product flexibility, backed with quick responses that your customers need.





Standard Features

Construction

- 2" x 6" exterior walls at 16" O.C.
- 2" x 6" floor joists at 16" O.C. - #2 or better lumber (14' wide)
- 2" x 8" floor joists at 16" O.C. - #2 or better lumber (16' wide)
- Tongue/grove O.S.B. Floor decking
- Wind zone 1 construction
- Zone III insulation (R12/R19/R22)
(Thickness and R-values listed are certified by original manufacturer at time of installation, and may be reduced due to compression in floor, wall, and ceiling cavities)
- Removable hinges
- 3/8" fiberboard backing
- Vinyl siding / shingle roof
- Ridge vent construction with fully vented eaves
- 8' flat textured ceilings
- 3680 fiberglass front door with sunburst and deadbolt lock
- 3280 9 Lite fiberglass rear door with deadbolt lock
- Thermal windows with grids
- Deluxe raised panel shutters
(front door side on doubles and hitch end on singles)
- Decorative gypsum interior panels

Plumbing & Heating

- Elongated residential toilets
- 60" One-piece fiberglass tubs
- Deep-well white kitchen sink
- China bath sinks
- Cross-handle plumbing fixtures
- Ceramic toilet tank, 1.6 gal flush
- Plumbing for washer
- Water shutoff valves
- Bath vanity mirrors
- 40 gal. Water heater / dual element with overflow drip pan
- Electric ignition gas furnace
- Furnace door
- Perimeter heat registers
- In-floor heat duct crossovers (doubles)
- Center seal at mate line (doubles)

Appliances

- 18 cu ft auto defrost refrigerator
- 30" gas range

Electric & Lighting

- 100 amp panel box with 10-20 breaker
- System bath exhaust fans, 50 CFM
- Wire and vent for dryer
- GFI at kitchen counters & bath vanities
- Patio lights at front and rear doors
- Exhaust vent fan with light in kitchen
- Ceiling light fixtures in all bedrooms

Floor Coverings

- Linoleum flooring
- 7/16" – 6 lb. Rebond carpet pad
- Shaw level II carpet (It's Cozy/Mantra)
- Carpet bar at transitions
- FHA rated carpet available

Cabinets

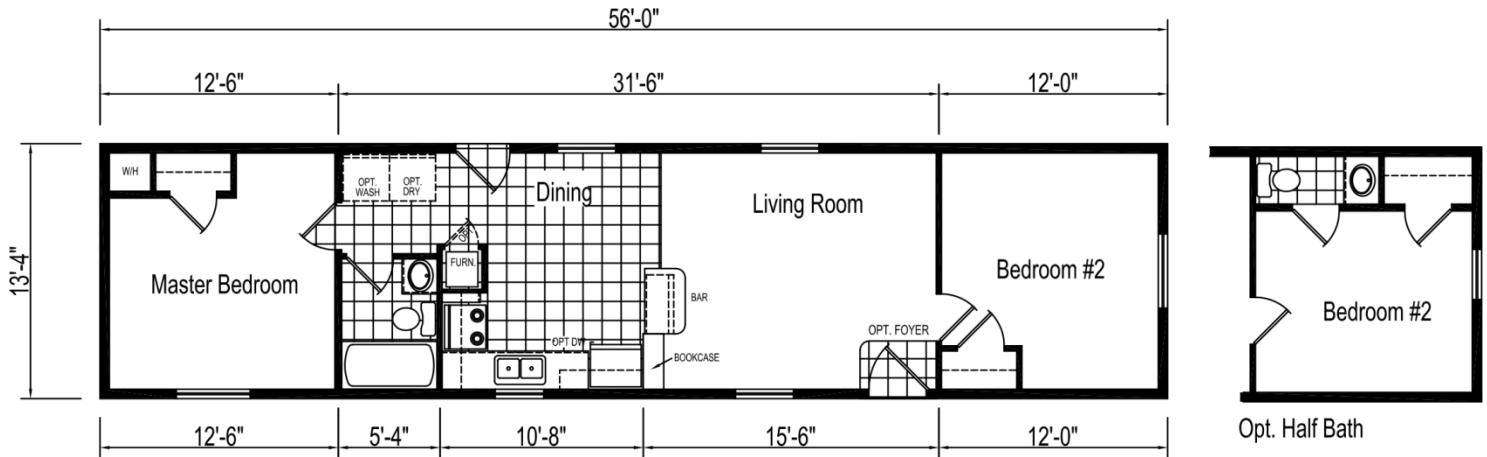
- Wood flat panel cabinet doors with hidden hinges
(available in: *Chocolate*, *Stratford Oak*, and *Timberwolf Gray*.
Hickory flat panel and raised panel available)
- Hidden hinges

Miscellaneous

- 3 5/8" ceiling molding
- Pre-hung white 6 panel interior passage doors
- Satin nickel passage door knobs
- Vented shelving throughout
- Shower curtain in tub baths
- Color coordinated valance drapery package
- Mini blinds all operating windows

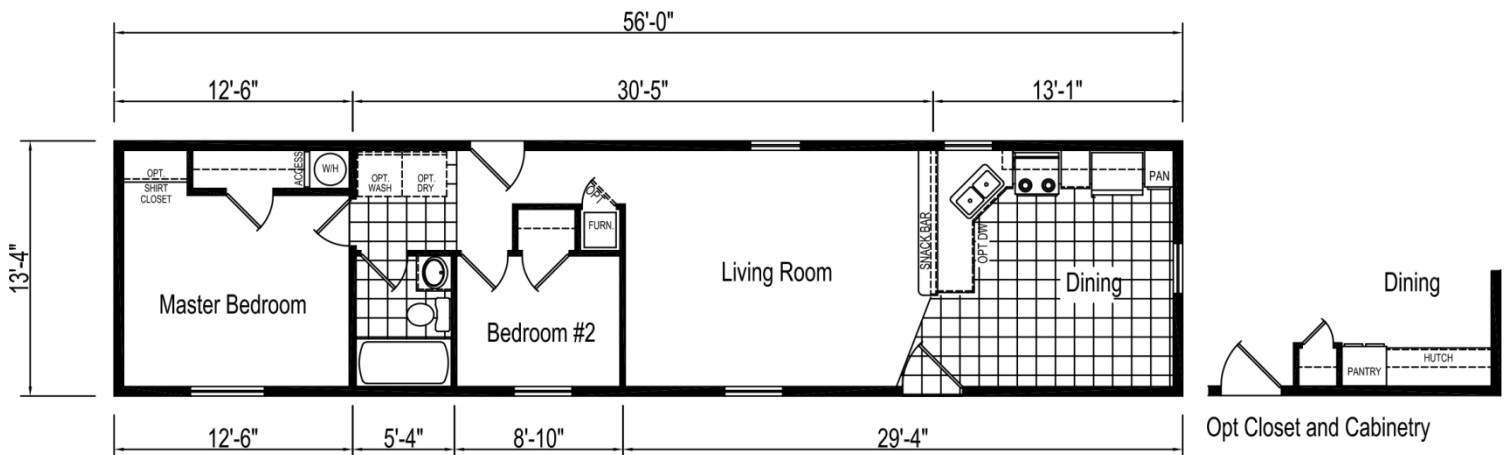
Hudson Series: Model 60F102-HS

2 Bedroom, 1 Bath
Appx. 746 sq. ft.
Nominal Size: 14' x 60'
Actual Size: 13' 4" x 56'



2 Bedroom, 1 Bath
Appx. 746 sq. ft.
Nominal Size: 14' x 60'
Actual Size: 13' 4" x 56'

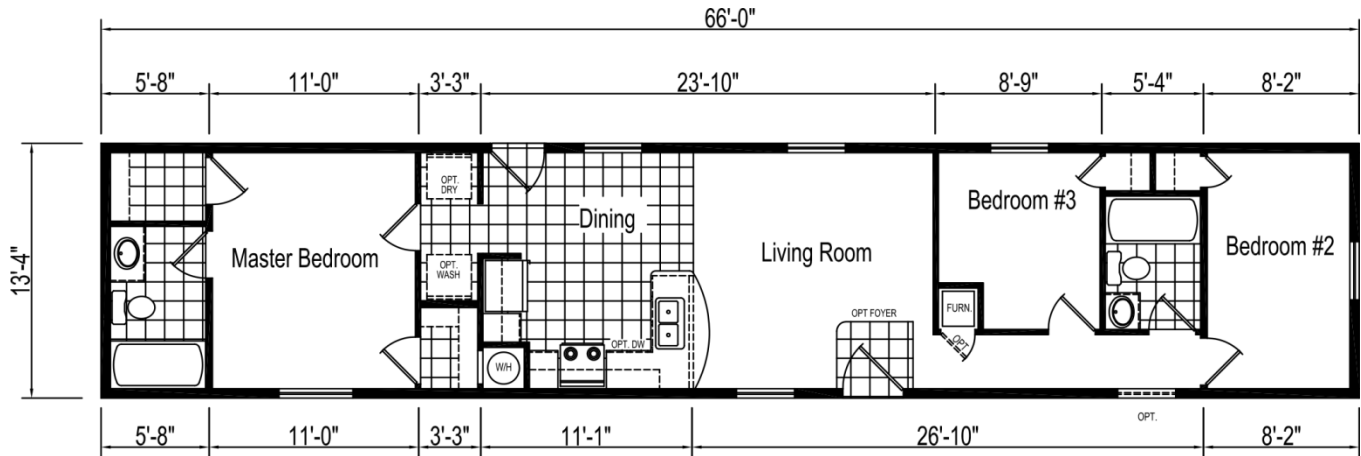
Hudson Series: Model 60F185-HS



3 Bedroom, 2 Bath
 Appx. 880 sq. ft.
 Nominal Size: 14' x 70'
 Actual Size: 13' 4" x 66'

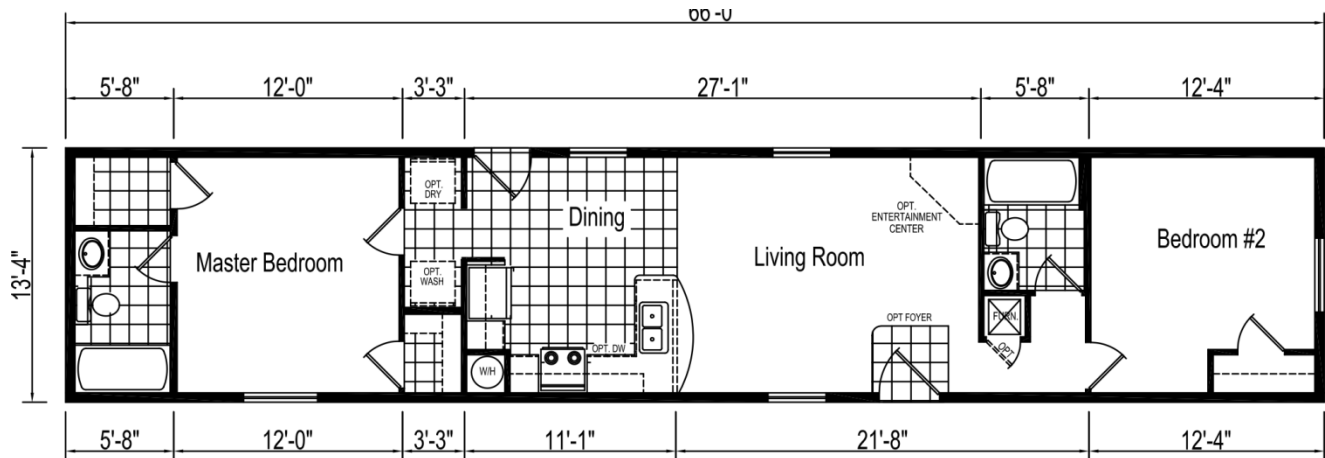
Hudson Series:

Model 70F127-HS



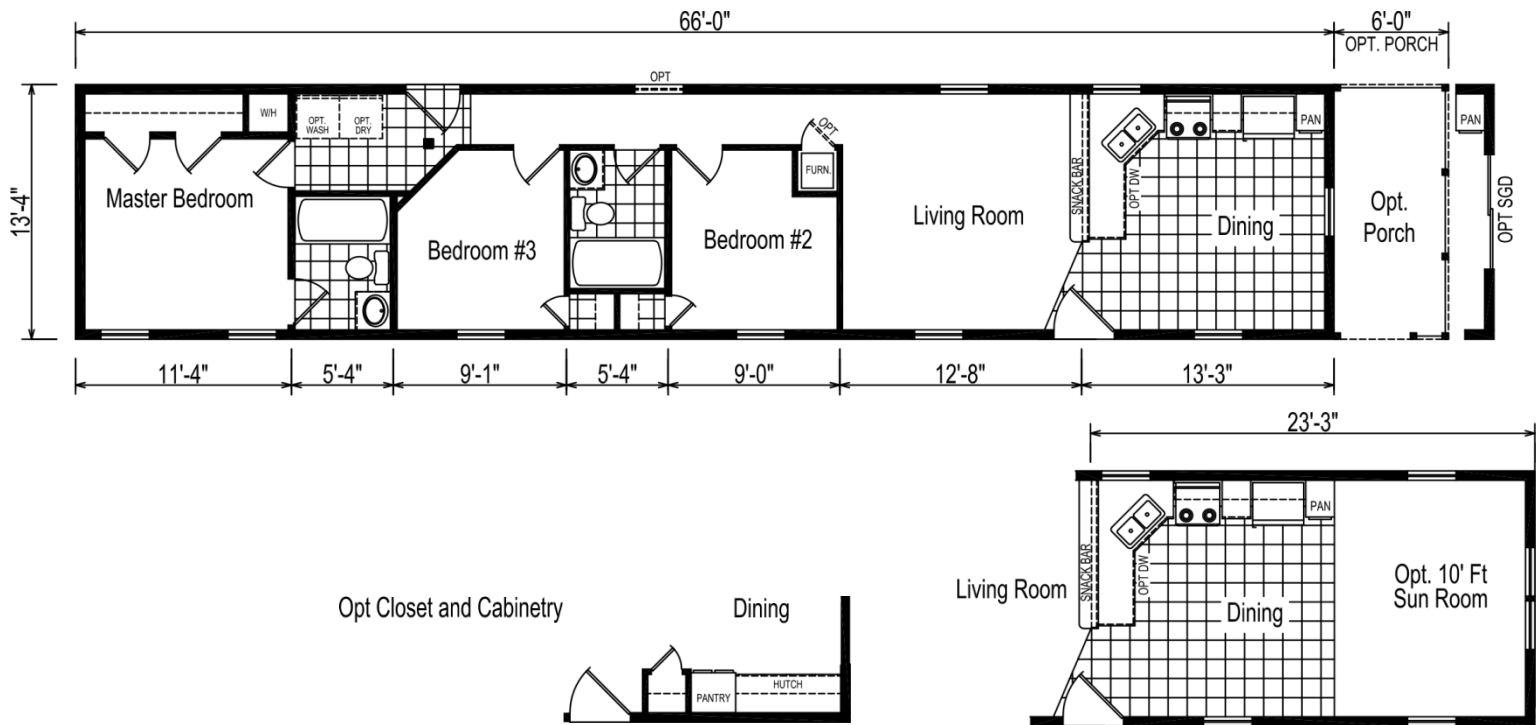
Hudson Series: Model 70F130-HS

2 Bedroom, 2 Bath
 Appx. 880 sq. ft.
 Nominal Size: 14' x 70'
 Actual Size: 13' 4" x 66'



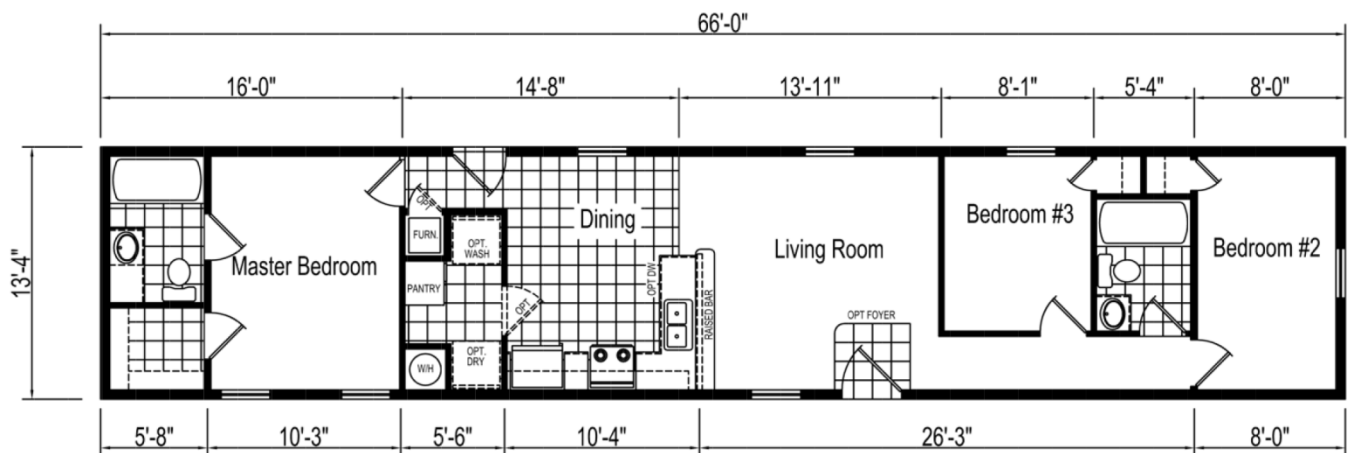
Model 70F146-HS

Actual Size: 13' 4" x 66'



Actual Size: 13' 4" x 66'

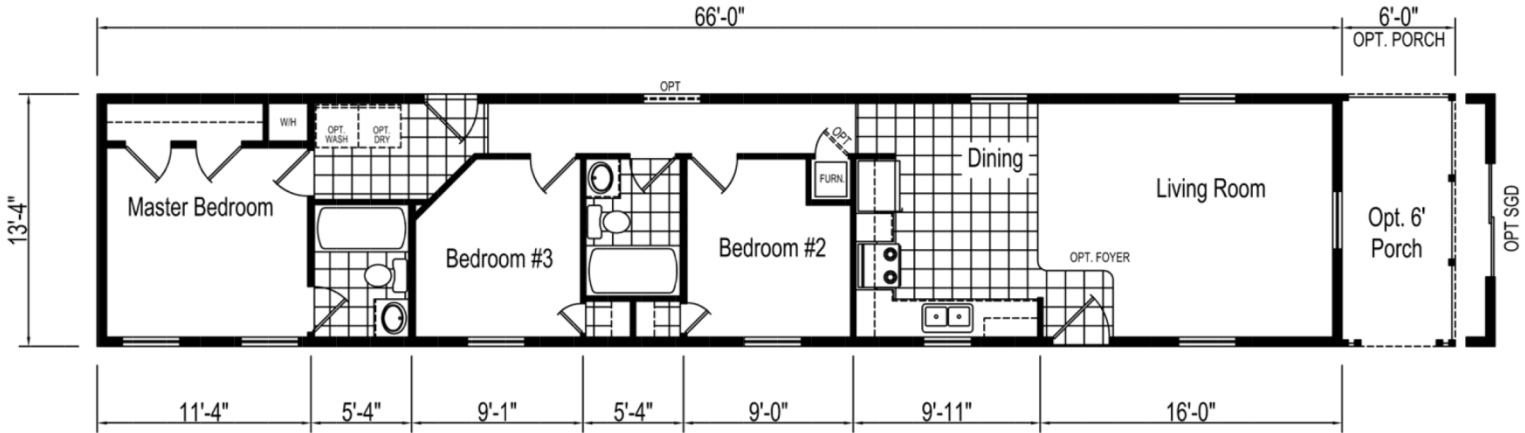
Model 70F150-HS



3 Bedroom, 2 Bath
 Appx. 880 sq. ft.
 Nominal Size: 14' x 70'
 Actual Size: 13' 4" x 66'

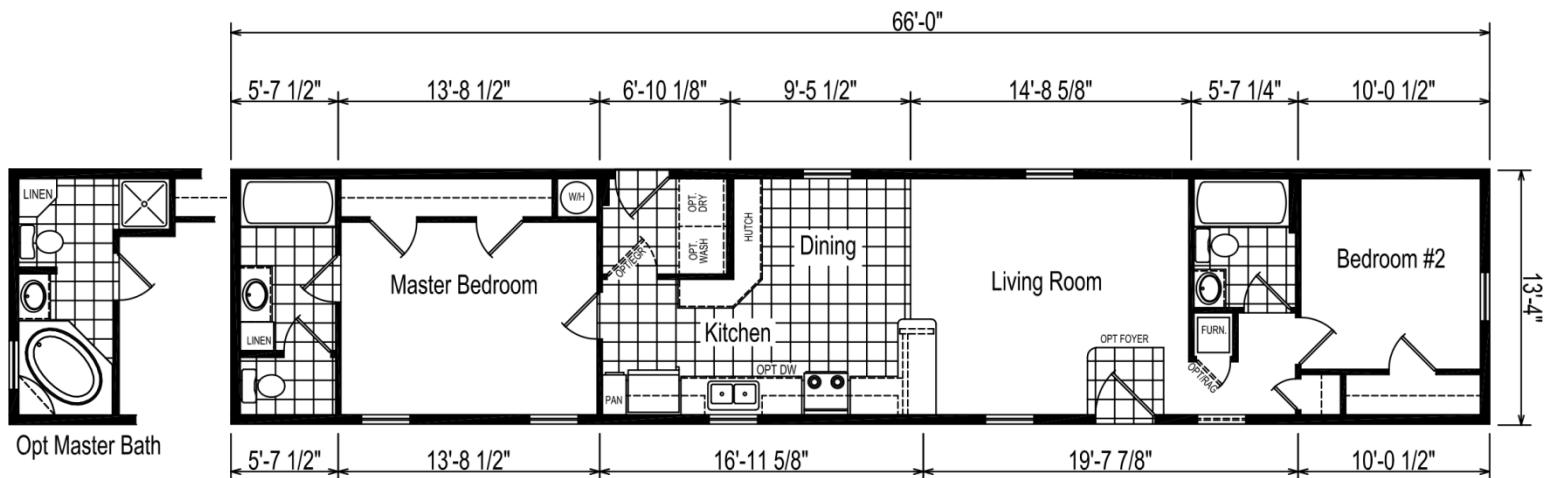
Hudson Series:

Model 70F151-HS



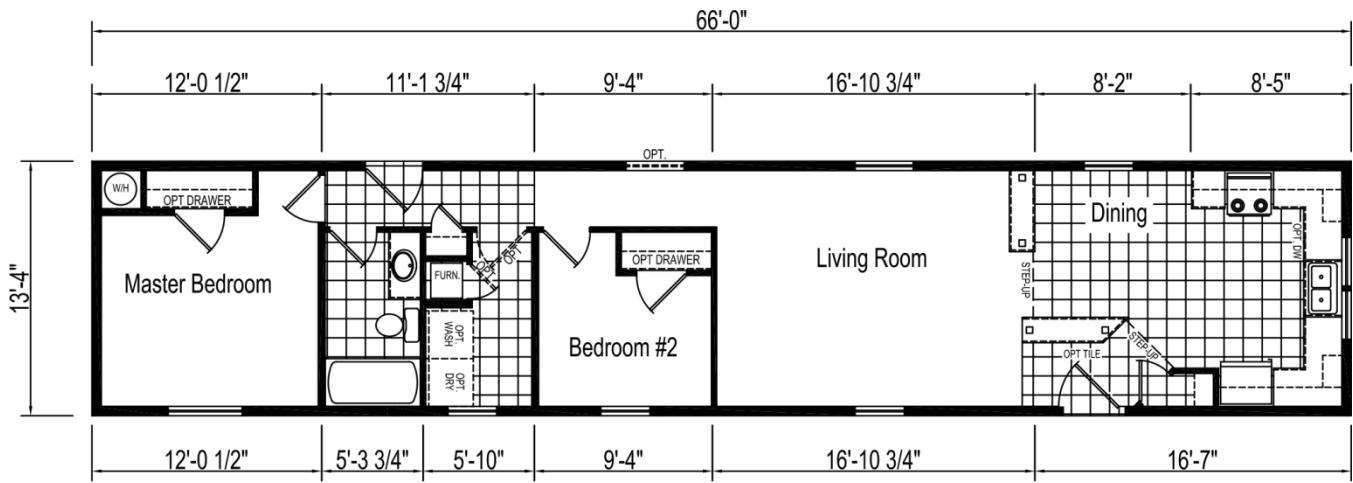
Hudson Series: Model 70F451-HS

2 Bedroom, 2 Bath
 Appx. 880 sq. ft.
 Nominal Size: 14' x 70'
 Actual Size: 13' 4" x 66'



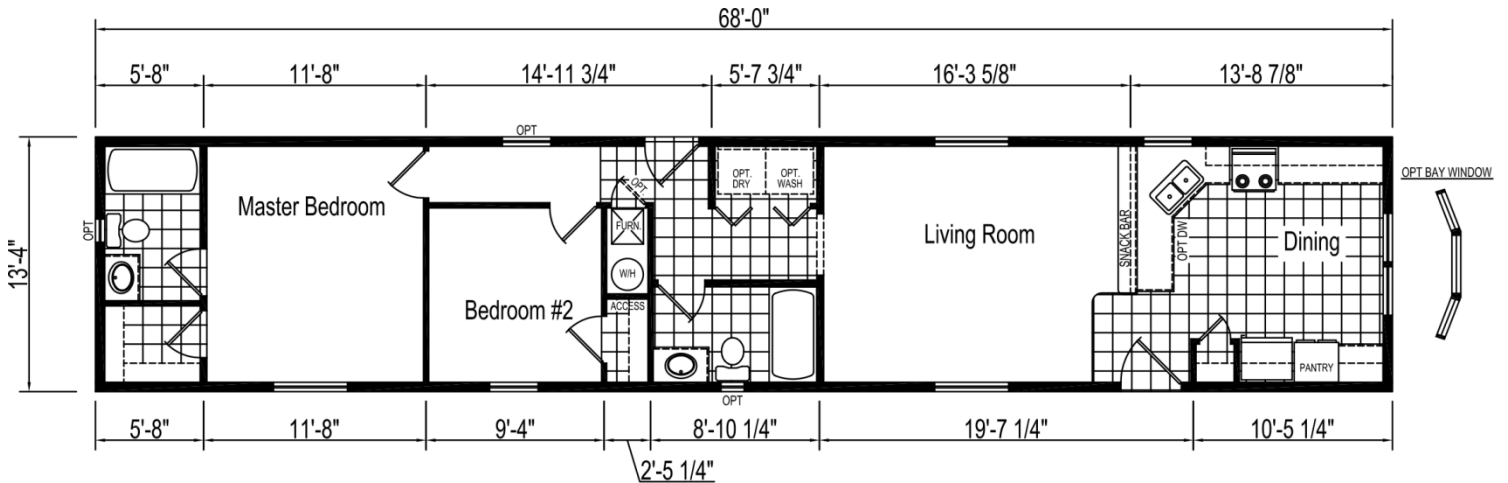
Hudson Series: Model 70F743-HS

2 Bedroom, 1 Bath
Appx. 880 sq. ft.
Nominal Size: 14' x 70'
Actual Size: 13' 4" x 66'



2 Bedroom, 2 Bath
Appx. 906 sq. ft.
Nominal Size: 14' x 72'
Actual Size: 13' 4" x 68'

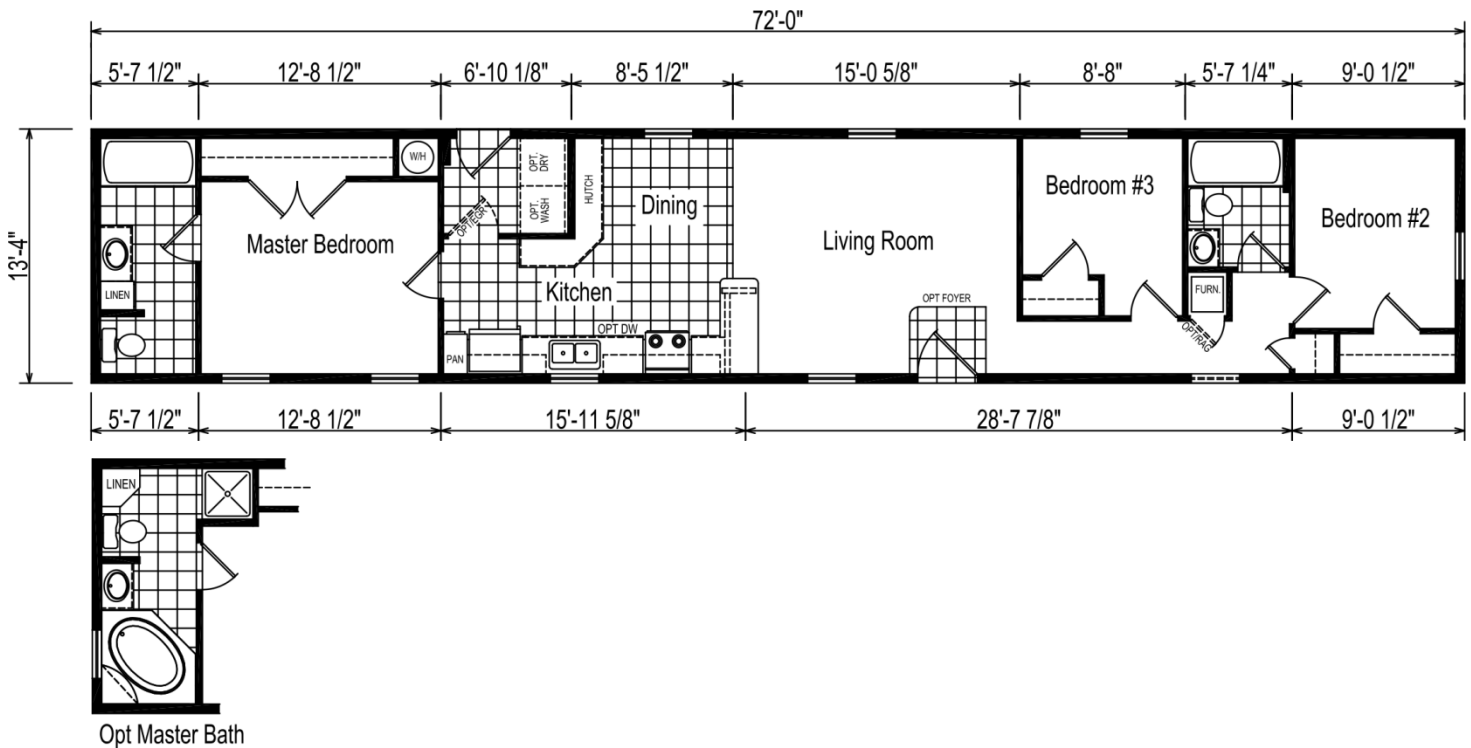
Hudson Series: Model 72F377-HS



3 Bedroom, 2 Bath
 Appx. 960 sq. ft.
 Nominal Size: 14' x 76'
 Actual Size: 13' 4" x 72'

Hudson Series:

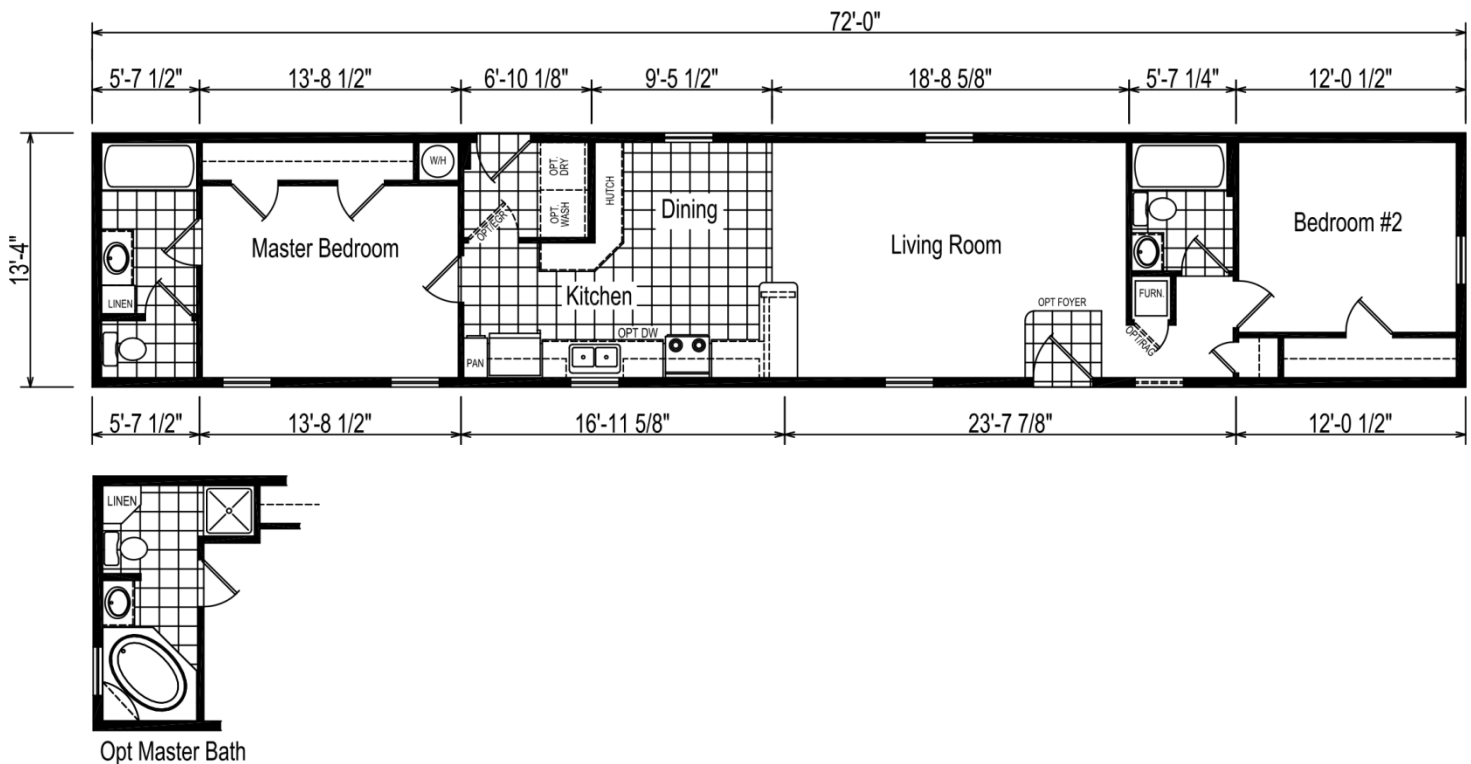
Model 76F452-HS



Hudson Series:

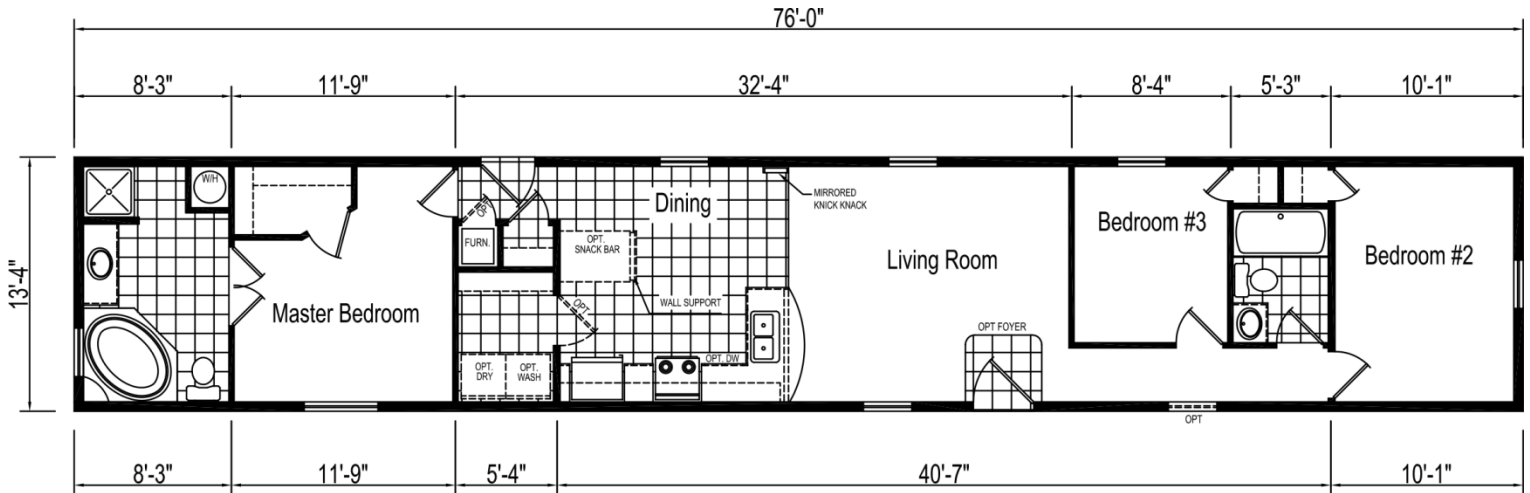
Model 76F454-HS

2 Bedroom, 2 Bath
 Appx. 960 sq. ft.
 Nominal Size: 14' x 76'
 Actual Size: 13' 4" x 72'



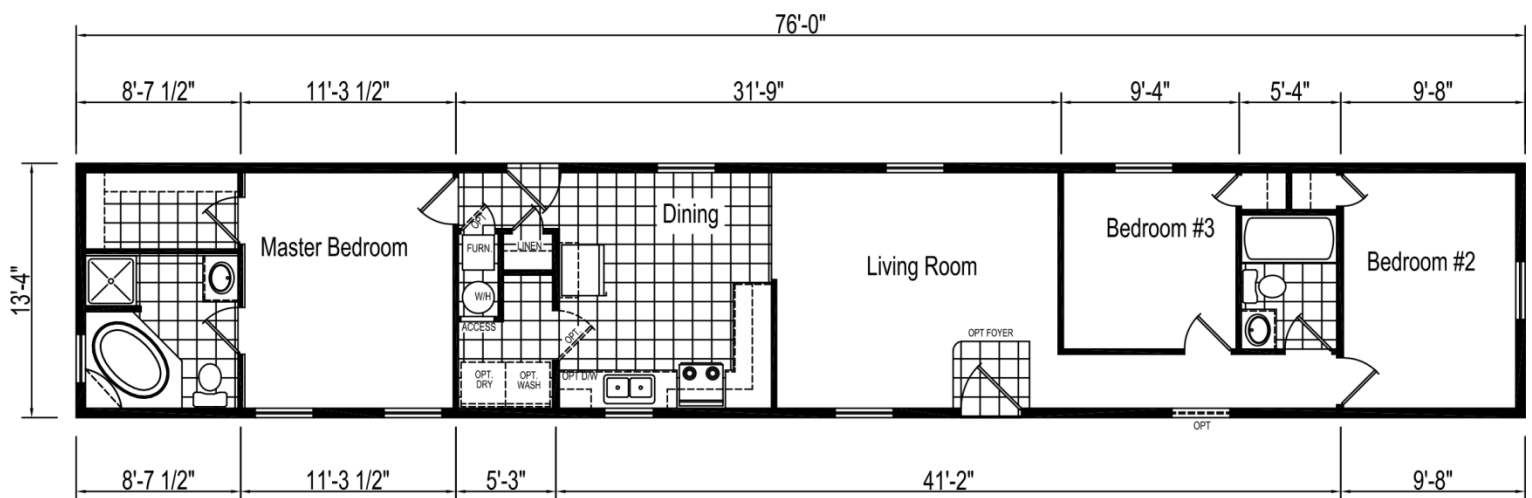
Hudson Series: Model 80F112-HS

3 Bedroom, 2 Bath
Appx. 1,013 sq. ft.
Nominal Size: 14' x 80'
Actual Size: 13' 4" x 76'



3 Bedroom, 2 Bath
Appx. 1,013 sq. ft.
Nominal Size: 14' x 80'
Actual Size: 13' 4" x 76'

Hudson Series: Model 80F153-HS



Hudson Series:
Model 80F225-HS



76'-0"

5'-7 1/2" 13'-8 1/2" 6'-10 1/8" 9'-5 1/2" 15'-0 5/8" 9'-8" 5'-7 1/4" 10'-0 1/2"

13'-4"

Master Bedroom

WIR

OPT DRY

OPT WASH

HUTCH

Dining

Kitchen

OPT DW

PAN

Living Room

OPT FOYER

Bedroom #3

Bedroom #2

5'-7 1/2" 13'-8 1/2" 16'-11 5/8" 29'-7 7/8" 10'-0 1/2"

Opt Master Bath



16' Wide

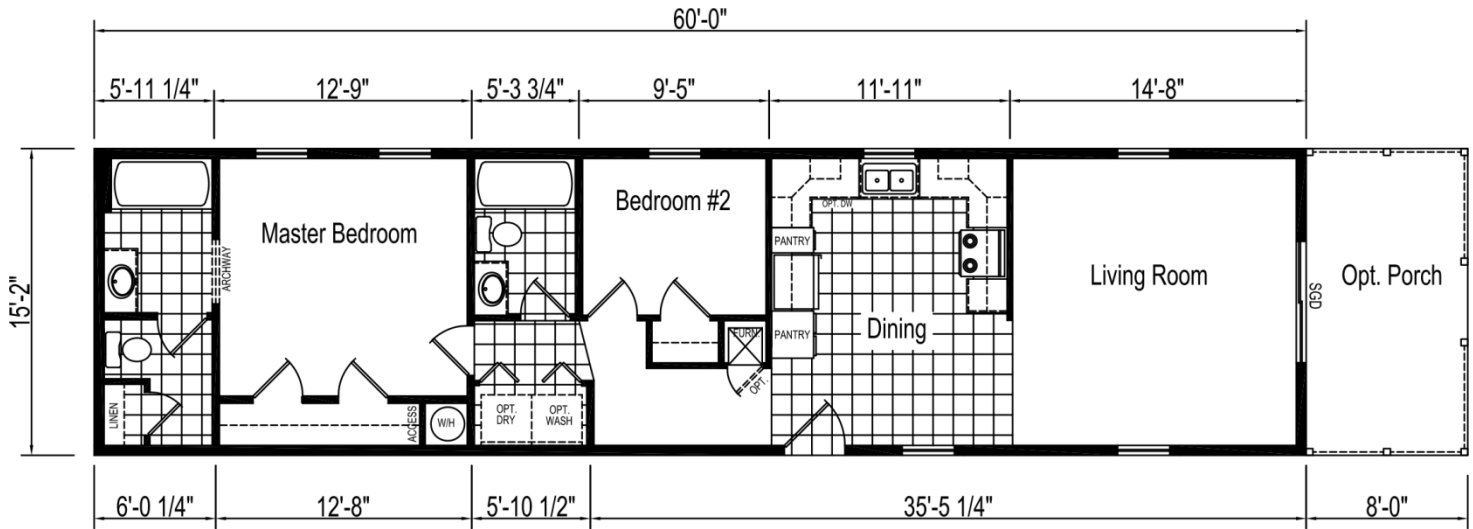
Single Section



2 Bedroom, 2 Bath
 Appx. 910 sq. ft.
 Nominal Size: 16' x 64'
 Actual Size: 15' 2" x 60'

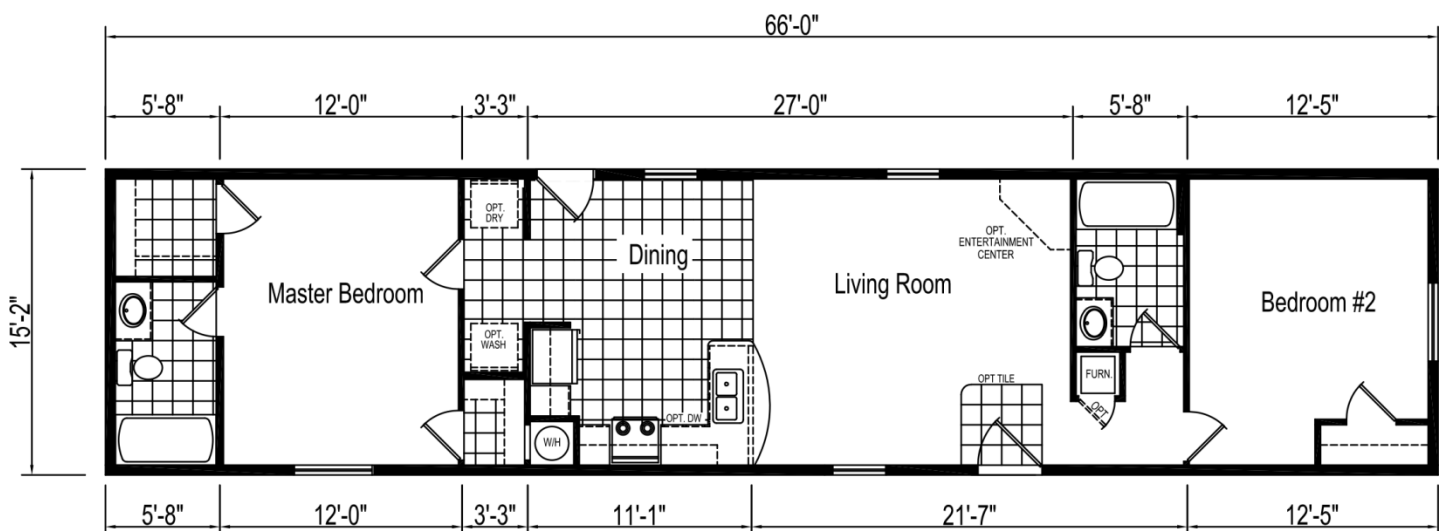
Hudson Series:

Model 64S322-HS



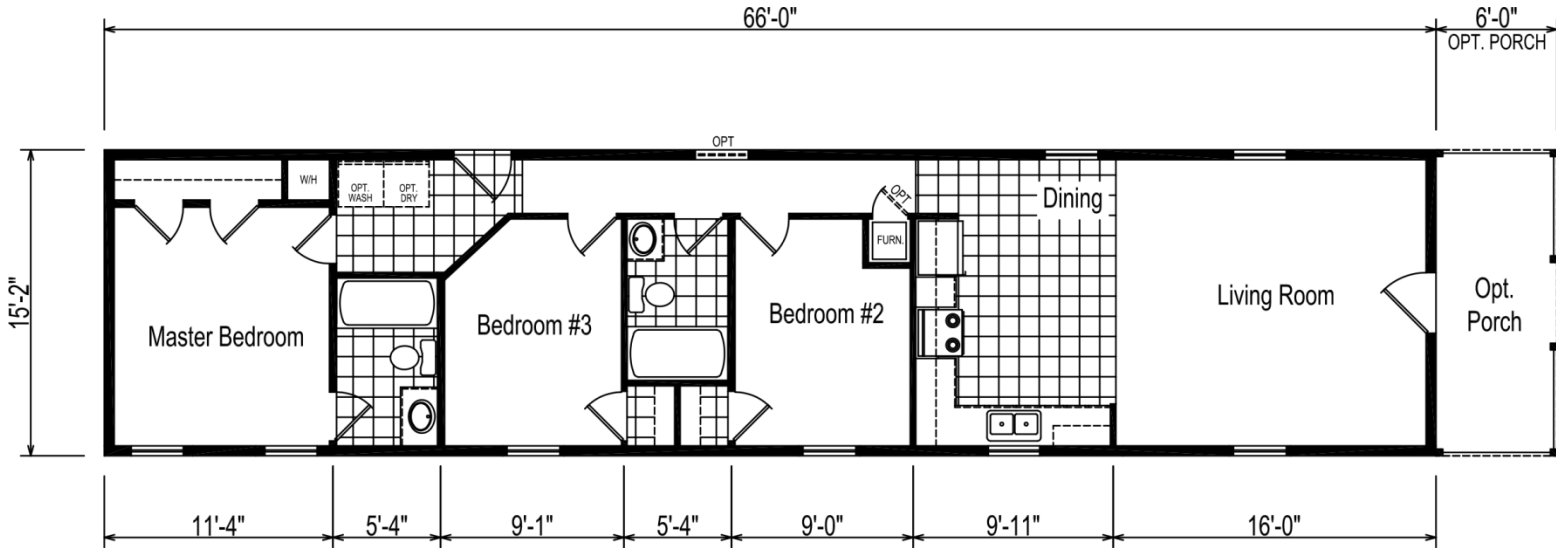
Hudson Series: Model 70S133-HS

3 Bedroom, 2 Bath
 Appx. 1,013 sq. ft.
 Nominal Size: 14' x 80'
 Actual Size: 13' 4" x 76'



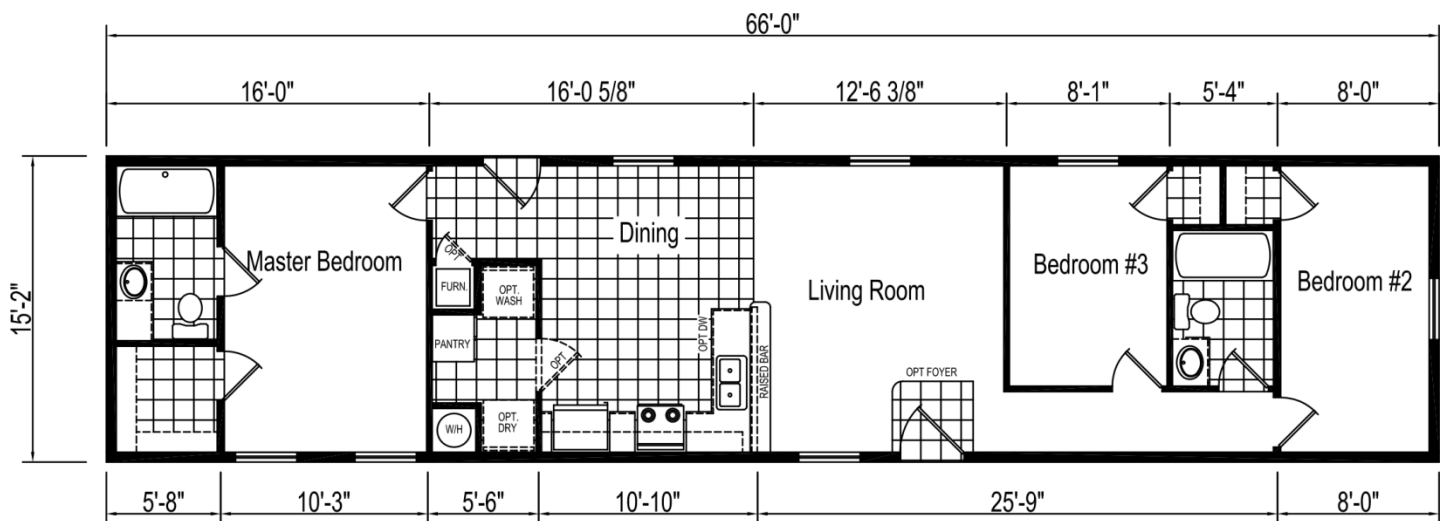
Hudson Series: Model 70S188-HS

3 Bedroom, 2 Bath
Appx. 1,001 sq. ft.
Nominal Size: 16' x 70'
Actual Size: 15' 2" x 66'



3 Bedroom, 2 Bath
Appx. 1,001 sq. ft.
Nominal Size: 16' x 70'
Actual Size: 15' 2" x 66'

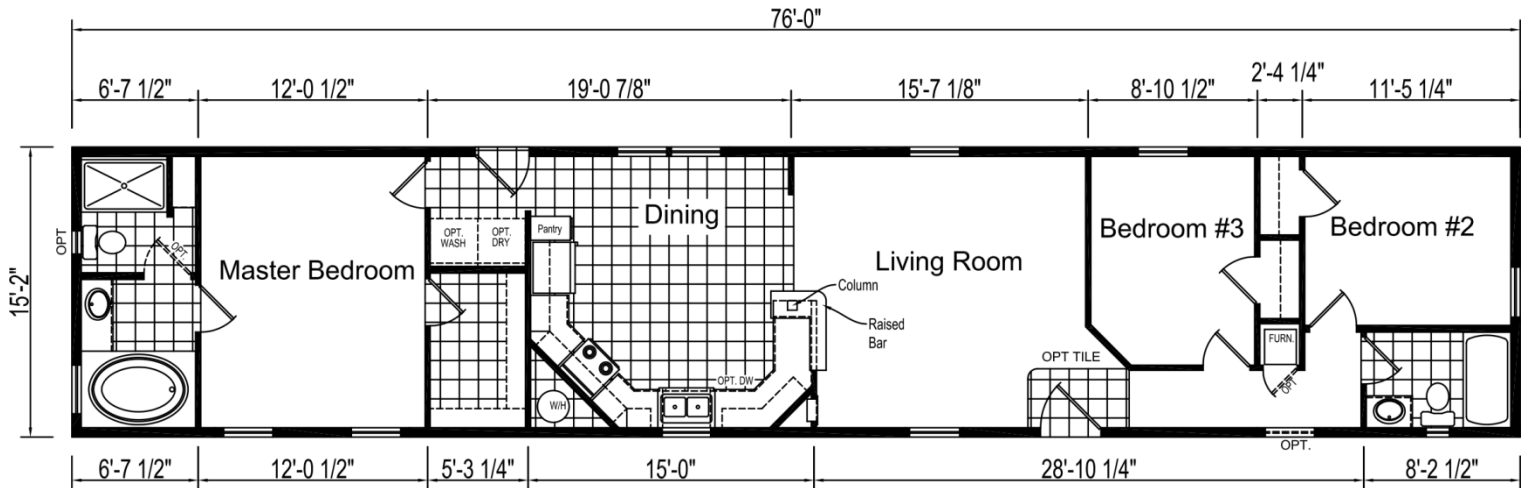
Hudson Series: Model 70S502-HS



3 Bedroom, 2 Bath
 Appx. 1,152 sq. ft.
 Nominal Size: 16' x 80'
 Actual Size: 15' 2" x 76'

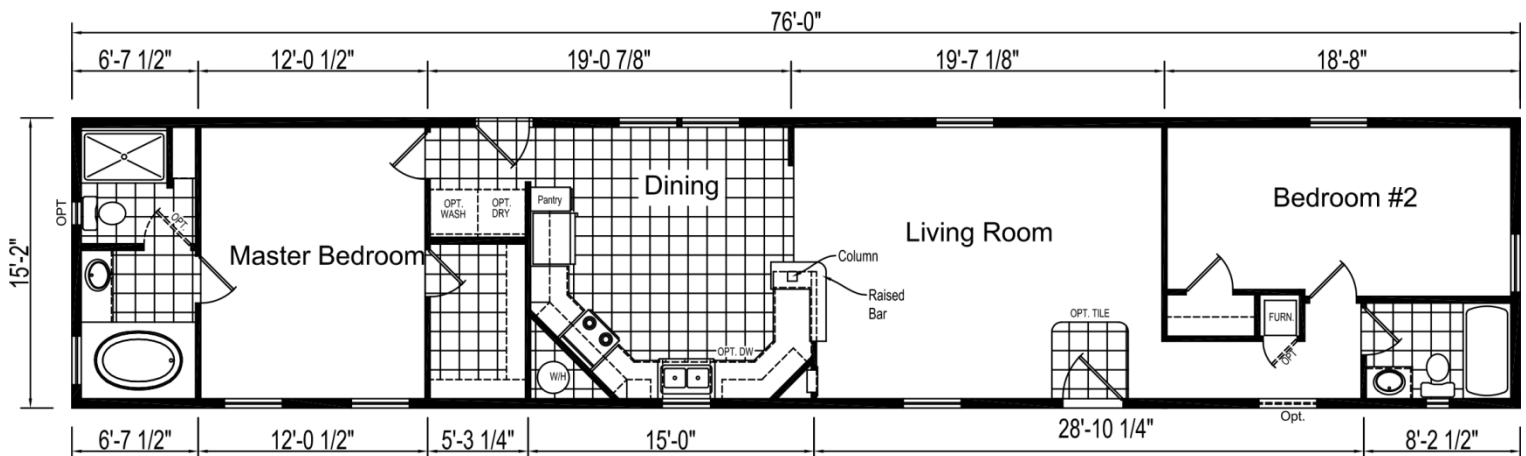
Hudson Series:

Model 80S126-HS



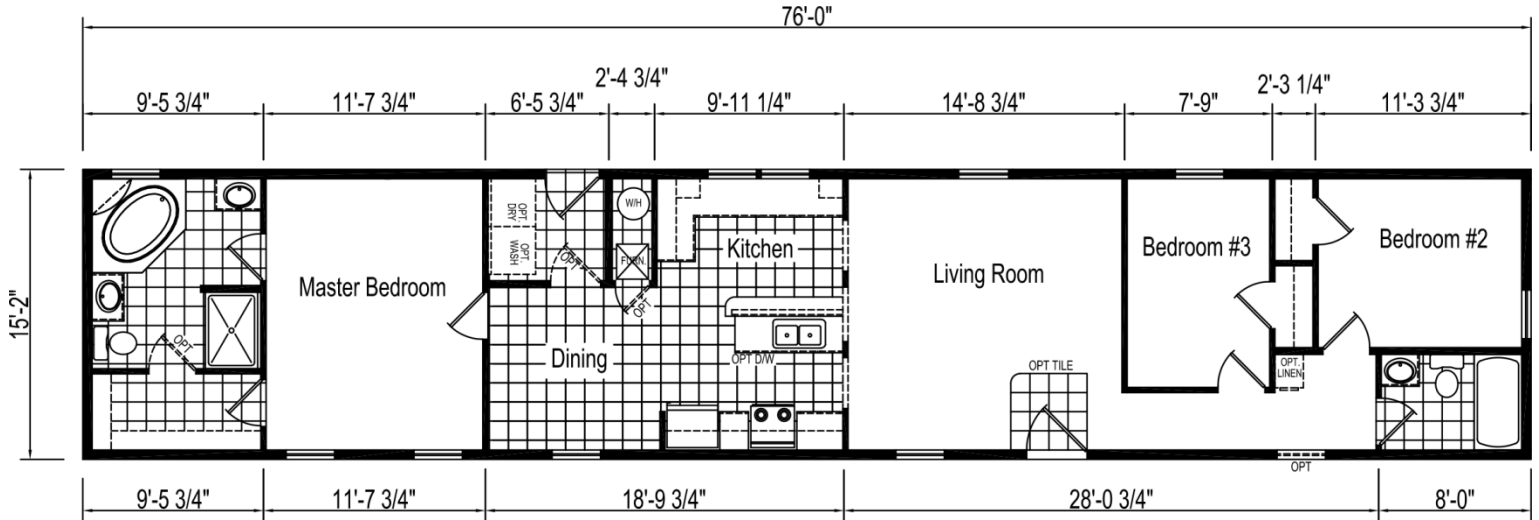
Hudson Series: Model 80S129-HS

2 Bedroom, 2 Bath
 Appx. 1,152 sq. ft.
 Nominal Size: 16' x 80'
 Actual Size: 15' 2" x 76'



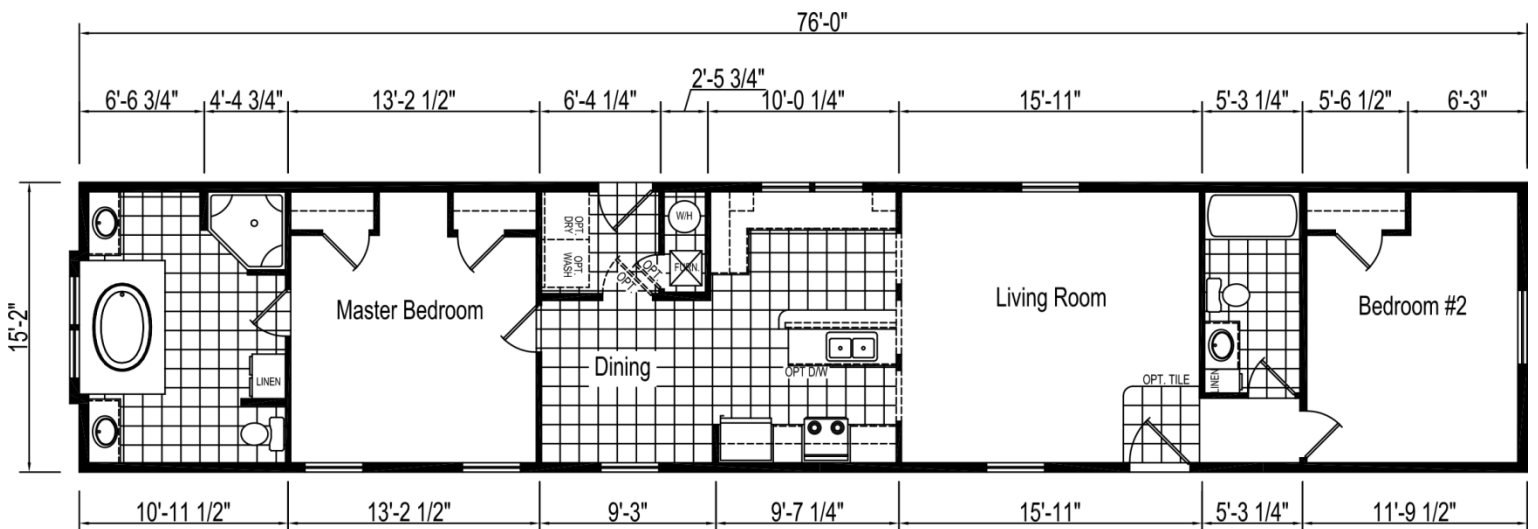
Hudson Series: Model 80S286-HS

3 Bedroom, 2 Bath
Appx. 1,152 sq. ft.
Nominal Size: 16' x 80'
Actual Size: 15' 2" x 76'



2 Bedroom, 2 Bath
Appx. 1,152 sq. ft.
Nominal Size: 16' x 80'
Actual Size: 15' 2" x 76'

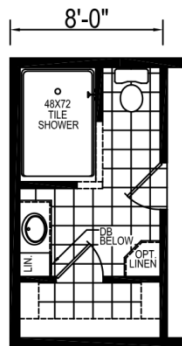
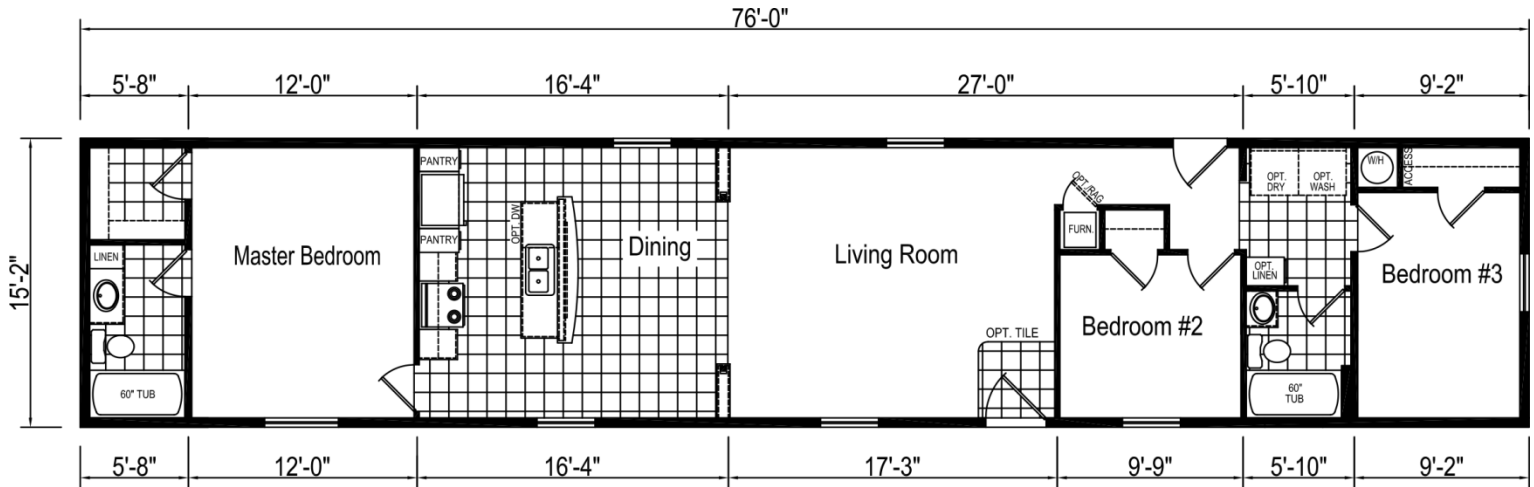
Hudson Series: Model 80S302-HS



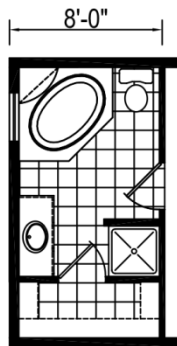
3 Bedroom, 2 Bath
 Appx. 1,152 sq. ft.
 Nominal Size: 16' x 80'
 Actual Size: 15' 2" x 76'

Hudson Series:

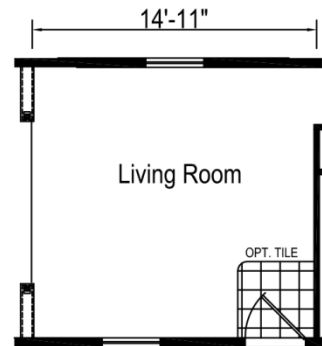
Model 80S337-HS



Opt Glamour Bath w/ Tile Shower



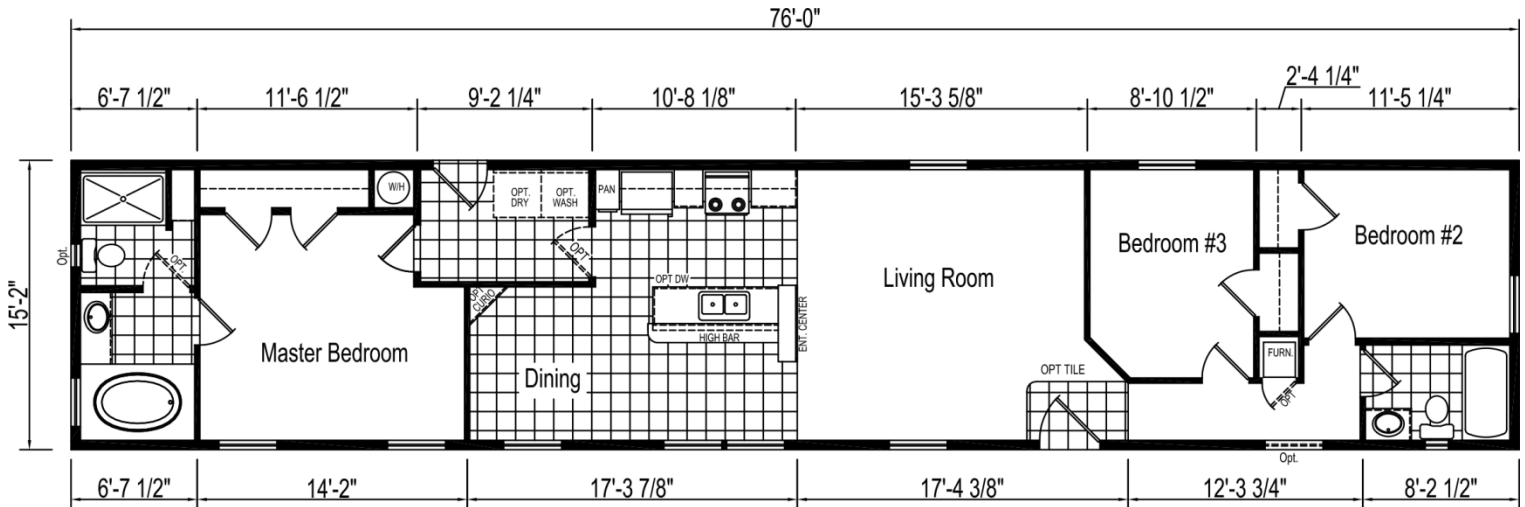
Opt Glamour Bath w/ Tub



Living Room w/ Opt Glamour Baths

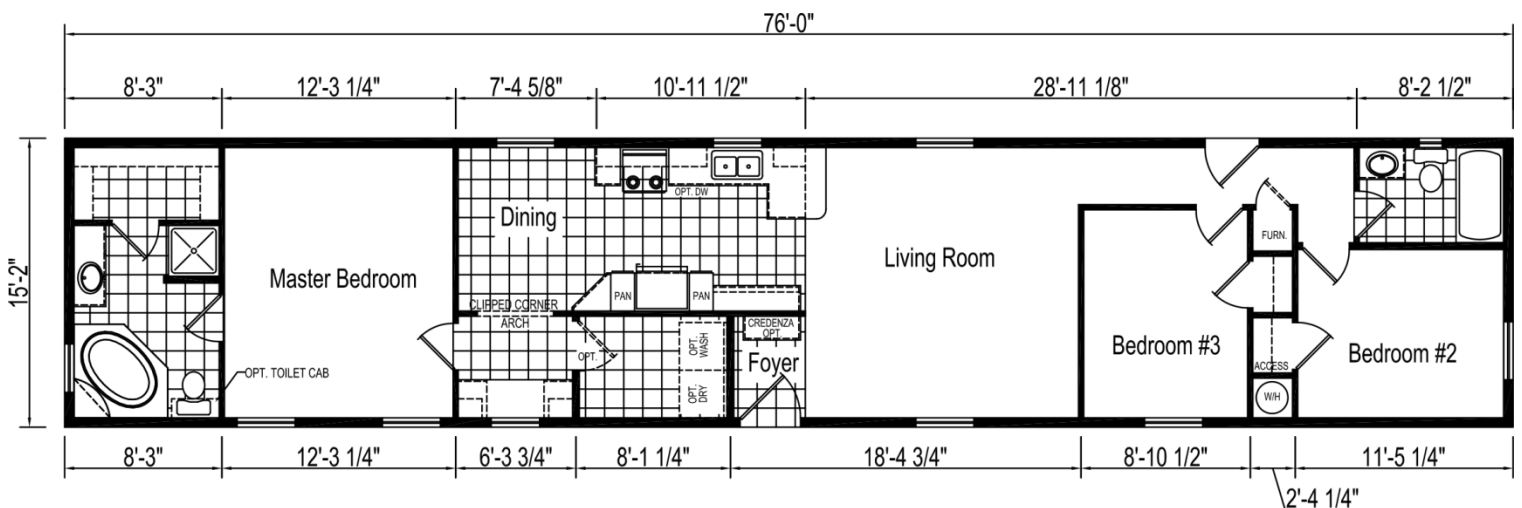
Hudson Series: Model 80S422-HS

3 Bedroom, 2 Bath
Appx. 1,152 sq. ft.
Nominal Size: 16' x 80'
Actual Size: 15' 2" x 76'



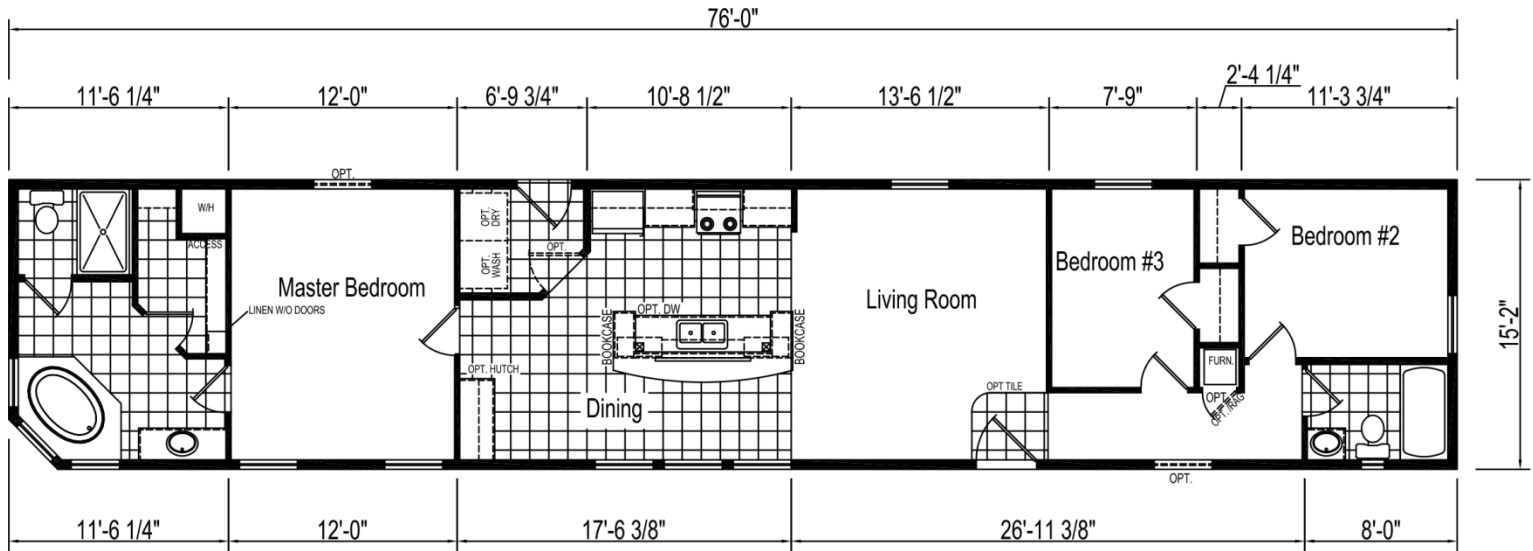
3 Bedroom, 2 Bath
Appx. 1,152 sq. ft.
Nominal Size: 16' x 80'
Actual Size: 15' 2" x 76'

Hudson Series: Model 80S611-HS



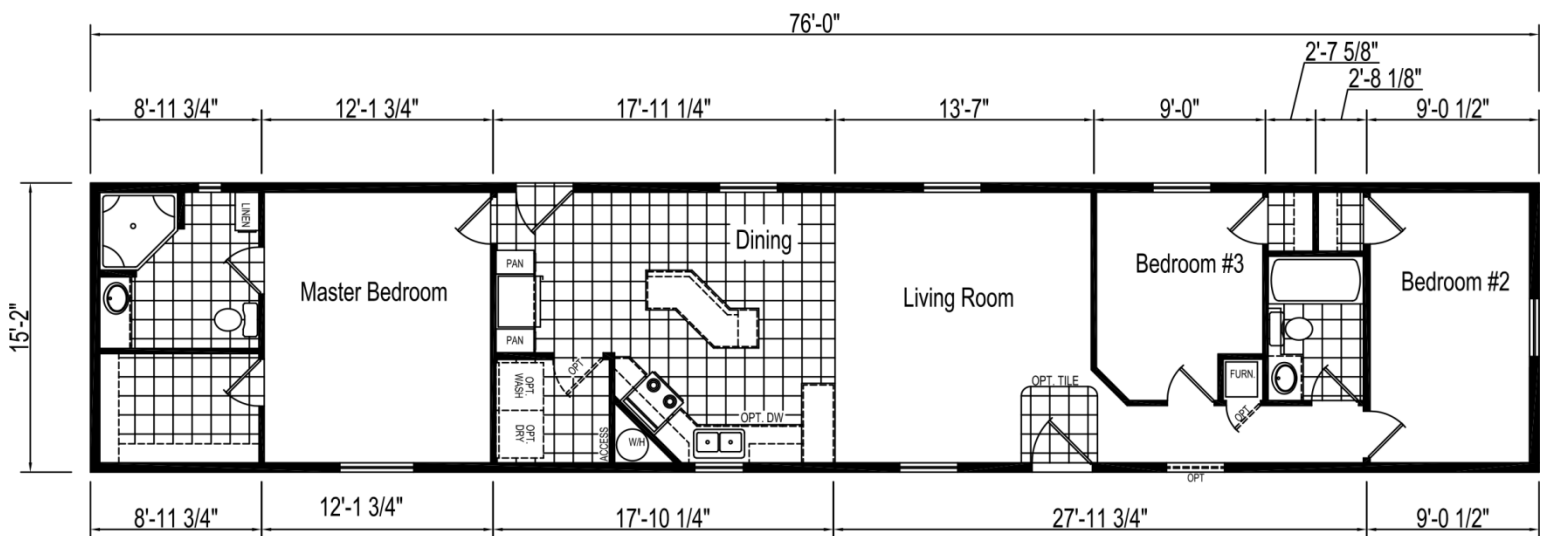
3 Bedroom, 2 Bath
 Appx. 1,152 sq. ft.
 Nominal Size: 16' x 80'
 Actual Size: 15' 2" x 76'

Hudson Series: Model 80S687-HS



Hudson Series: Model 80S888-HS

3 Bedroom, 2 Bath
 Appx. 1,152 sq. ft.
 Nominal Size: 16' x 80'
 Actual Size: 15' 2" x 76'





21 South Groffdale Road • Leola, PA 17540
(800) 406-1062 • (717) 656-2381
Fax (717) 656-0316
www.EagleRiverHomes.net